

Variance Monitor

Right on the money

Variance Monitor™ - the fastest and most accurate way to compare Payroll and Time results in SAP®. Variance Monitor is insurance for your Payroll and Time management system. This easy to use application makes sure each check you cut is right on the money!

Our intimate knowledge of the implementation and upgrade process for HR led to the creation of Variance Monitor. Through experience in hundreds of implementations worldwide, we recognize the need for automation when comparing Payroll and Time results. This tool dramatically reduces the time and effort required for the parallel run phase.

Variance Monitor Pays for Itself

- ❖ **New Implementation of SAP:**
Comparing data from your legacy payroll system to SAP HR has never been easier. Reduce consulting hours for this effort by at least 75%!

- ❖ **Period-to-Period Comparisons:**
Avoid costly mistakes from cycle to cycle by setting a variance threshold and automatically comparing pay statements. Never have to recoup money again.

- ❖ **Upgrade to new SAP version/Support Packs:**
Compare results between SAP versions with ease and accuracy. Gone are the days of custom queries and random samples. Check every employee with the click of a button.

Variance monitor 2.20

Comparison ID

Comparison number 113

Description R3E Upgrade: Final go-live test (v4)

Data source

Period to Period on the same R/3 system.

Another R/3 system - RFC

Another R/3 system - File

Legacy system - File

Comparison data

Payroll Wage types

Time Wage types

Absence quota types

PA Master data

Country United States

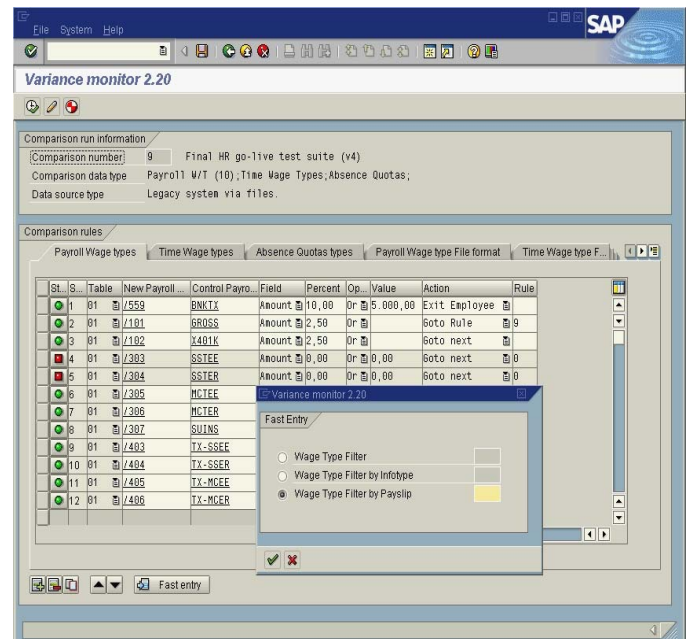
Variance Monitor

Audit Reporting

Specify even your most complex comparison criteria through a simple rule definition interface. Acting on your input, VM creates telling and concrete results of the variances. Example: Users of Variance Monitor utilize the detailed statistics produced by the tool to audit the Payroll and Time Results produced by SAP before Go-Live.

Features

- ❖ Allows for comparisons from SAP to SAP, SAP to Legacy, and period to period on the same system.
- ❖ Compare user-defined formula wage type combinations - ex. Create an employee FICA wage type as a combination of Employee Social Security and Employee Medicare. Use this virtual wage type for comparing against the Legacy FICA wage type.



- ❖ Supports active as well as off cycle and retroactive results during comparisons.

Supported SAP R/3 Release: 4.6B, 4.6C and R/3 Enterprise

For more information or to schedule a demonstration, contact: sales@magnisol.com.

**Variance Monitor is a trademark of EPI-USE Systems Limited.*

**Magnisol, the Magnisol logo and the Magnisol tagline are all trademarks of Magnisol.*

**SAP, mySAP, R/3, and all other SAP products and services mentioned herein are trademarks or registered trademarks of SAP AG in Germany and several other countries.*