

Query Manager

A complete tool for Advanced SAP HCM Reporting

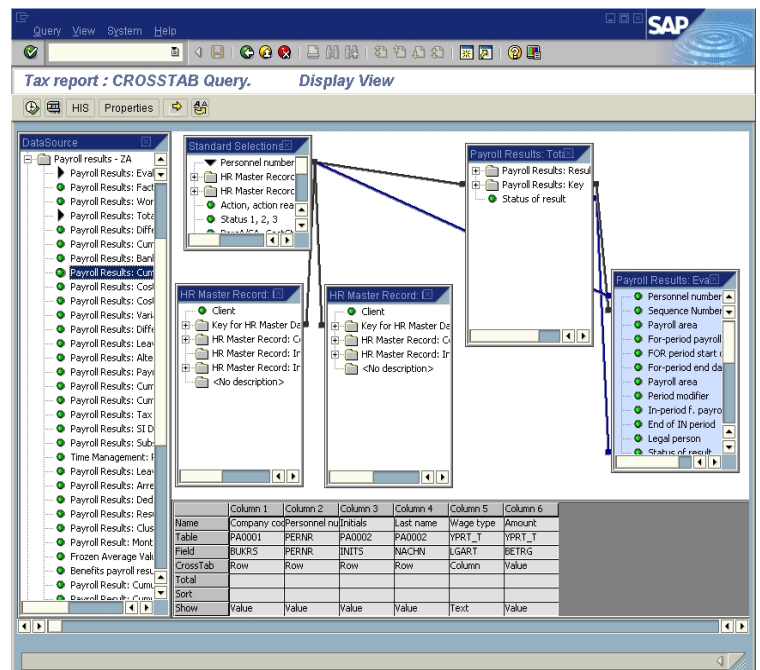
Add muscle to your reporting capabilities with the MagniSuite™ tool for Global Reporting—Query Manager™. This tool's easy-to-use interface vastly extends access to SAP HCM information by offering interactive queries and detailed reporting.

Query Manager allows the query and reporting of Master Data, HR Cluster Data, PA and PD Infotypes, HR Configuration Tables, Audit Trail (PCL4,) and User Master Data.

Advanced Cluster Reporting

Query Manager (QM) is the **only** query tool that allows detailed reporting on payroll and time results stored within the SAP HR clusters.

- ❖ **Payroll Results:** breakdown of retro-results, payroll accumulations and wage type split details, e.g. “Create a monthly report showing employees total cost data by cost center, including the cost information based on % splits or cost center reassignments.”
- ❖ **Time Results:** leave balances and quotas, e.g. “List employees in my division who took less than 10 hours sick leave last quarter” or “Query on the overtime counter to report on employees who will start to receive overtime at a given point in time.”
- ❖ **Master Data and Results Combination:** e.g. “Download into Excel all 401K and benefits deductions grouped by cost center for the month.”



Query Manager

Easy to Use Interface

Query Manager eliminates the gap between those who need information and those who can access it. All users can now employ the power of SQL by using a simple drag-and-drop interface. The "query by example" abstraction enables the use of powerful data retrieval features while hiding the complexity of native SQL.

The Query Manager Advantage

- ❖ Create reports without the need for an ABAP programmer. Generate reports from live data without having to first extract the data into an external file.
- ❖ Query Manager generates a normal PA or PD logical database ABAP report. Standard HR authorizations and use of default selection screens are automatically supported.
- ❖ Complete scalability. Query Manager employs the most optimal ABAP coding techniques to deliver reports that perform even better than "hand written" reports.
- ❖ Relieves users of the need to realign report development from one SAP HCM release to the next, plus Query Manager seamlessly integrates with SAP Query.

For more information or to schedule a demonstration, contact: sales@magnisol.com.

Supported SAP R/3 Release: 4.6B, 4.6C and R/3 Enterprise

**Query Manager is a trademark of EPI-USE Systems Limited.*

Magnisol, the Magnisol logo and MagniSuite are all trademarks of Magnisol.

SAP, mySAP, R/3, and all other SAP products and services mentioned herein are trademarks or registered trademarks of SAP AG in Germany and several other countries.